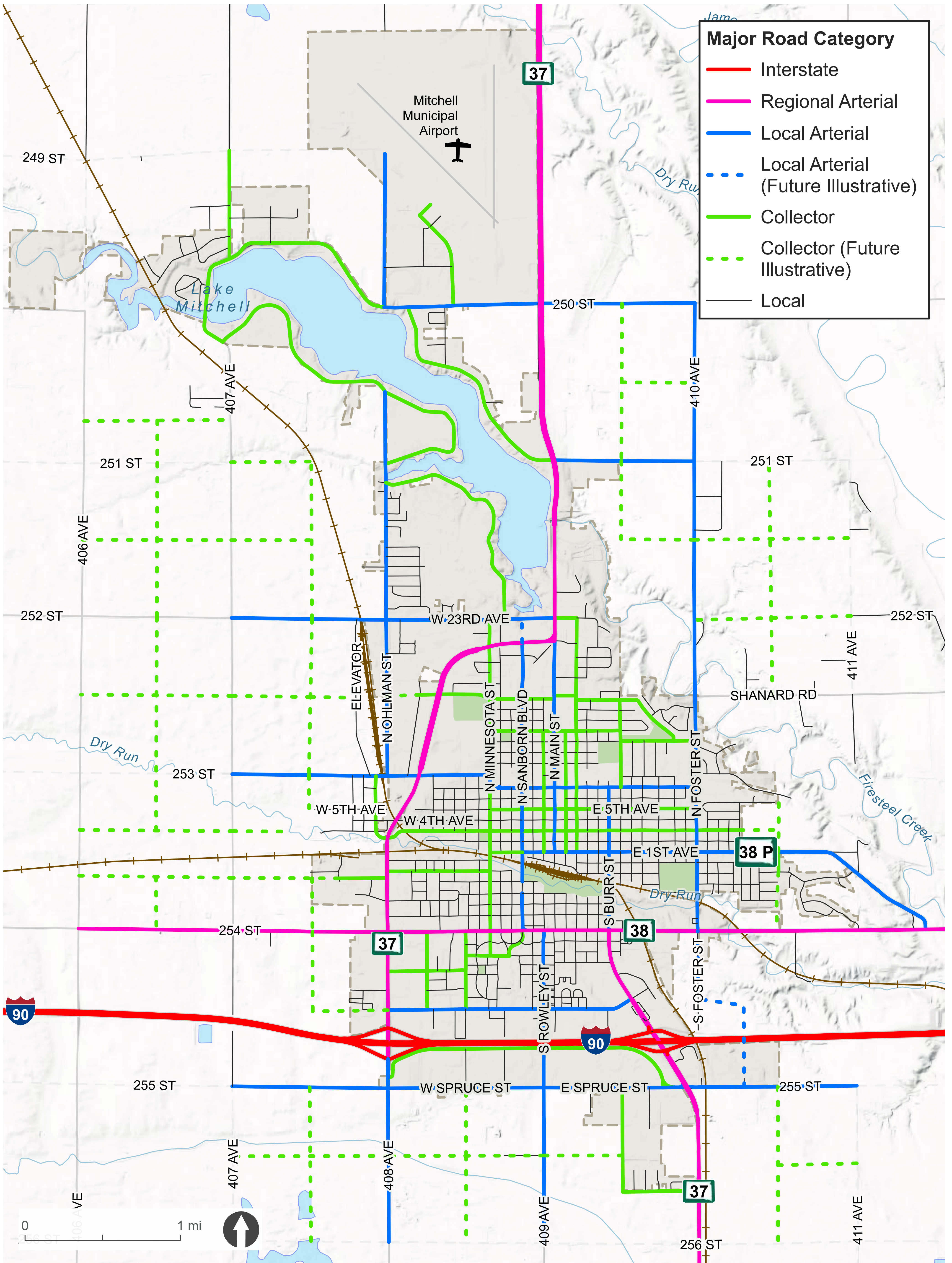


MAJOR ROADS PLAN

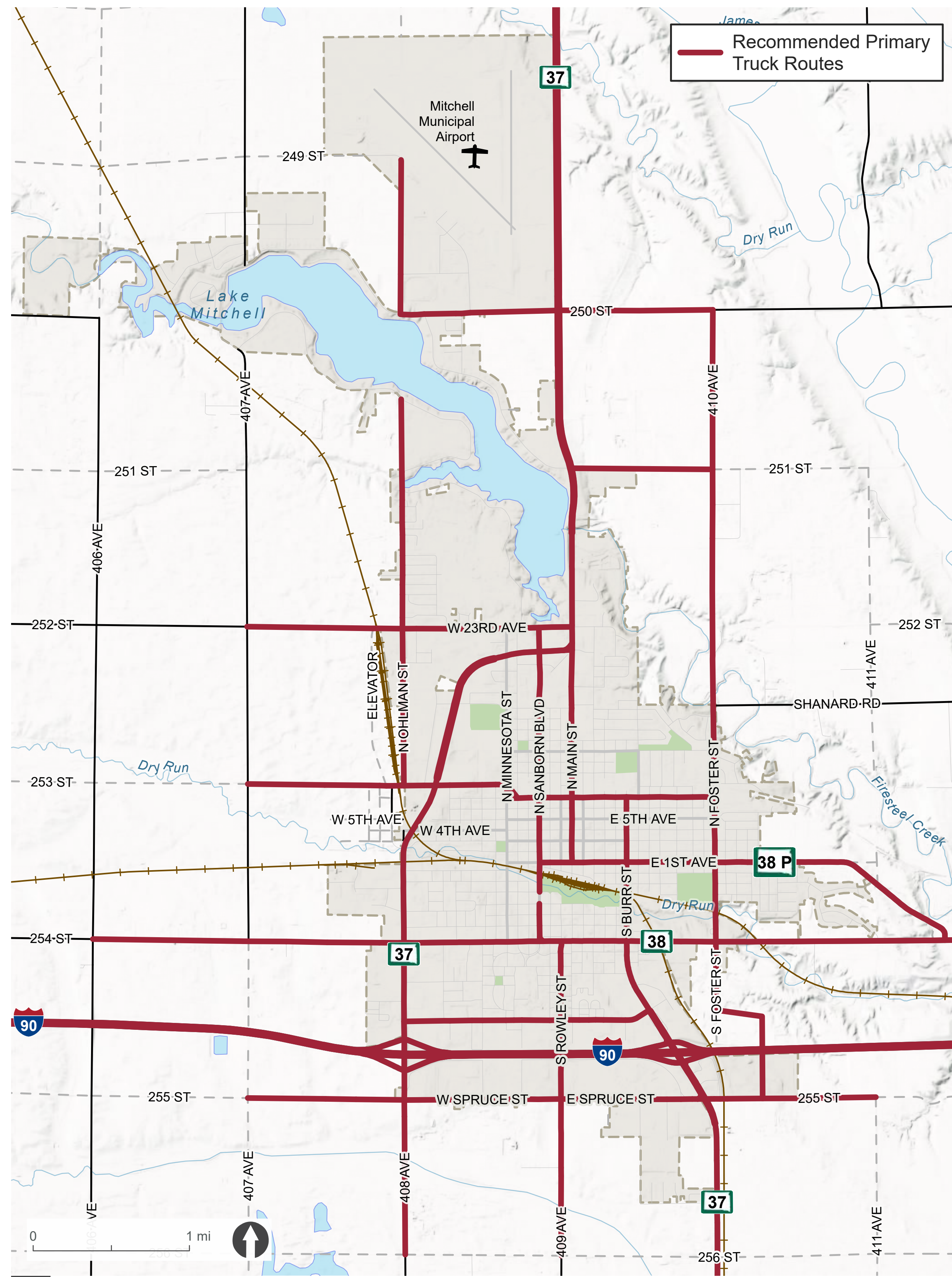
MAJOR ROADS PLAN

MAJOR ROADS PLAN

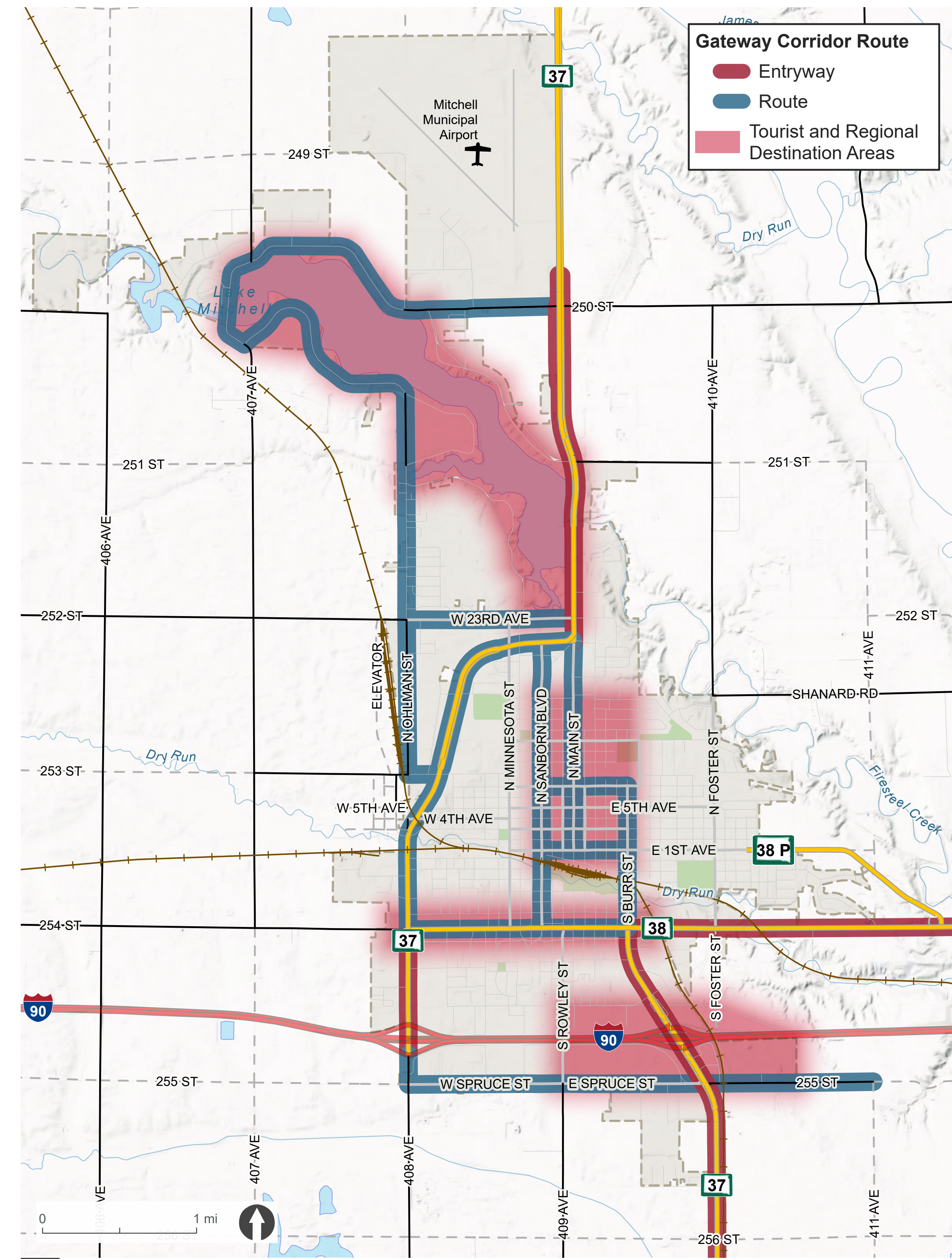


MAJOR ROADS PLAN ROUTE RECOMMENDATIONS

RECOMMENDED MAJOR ROADS PLAN PRIMARY TRUCK ROUTES

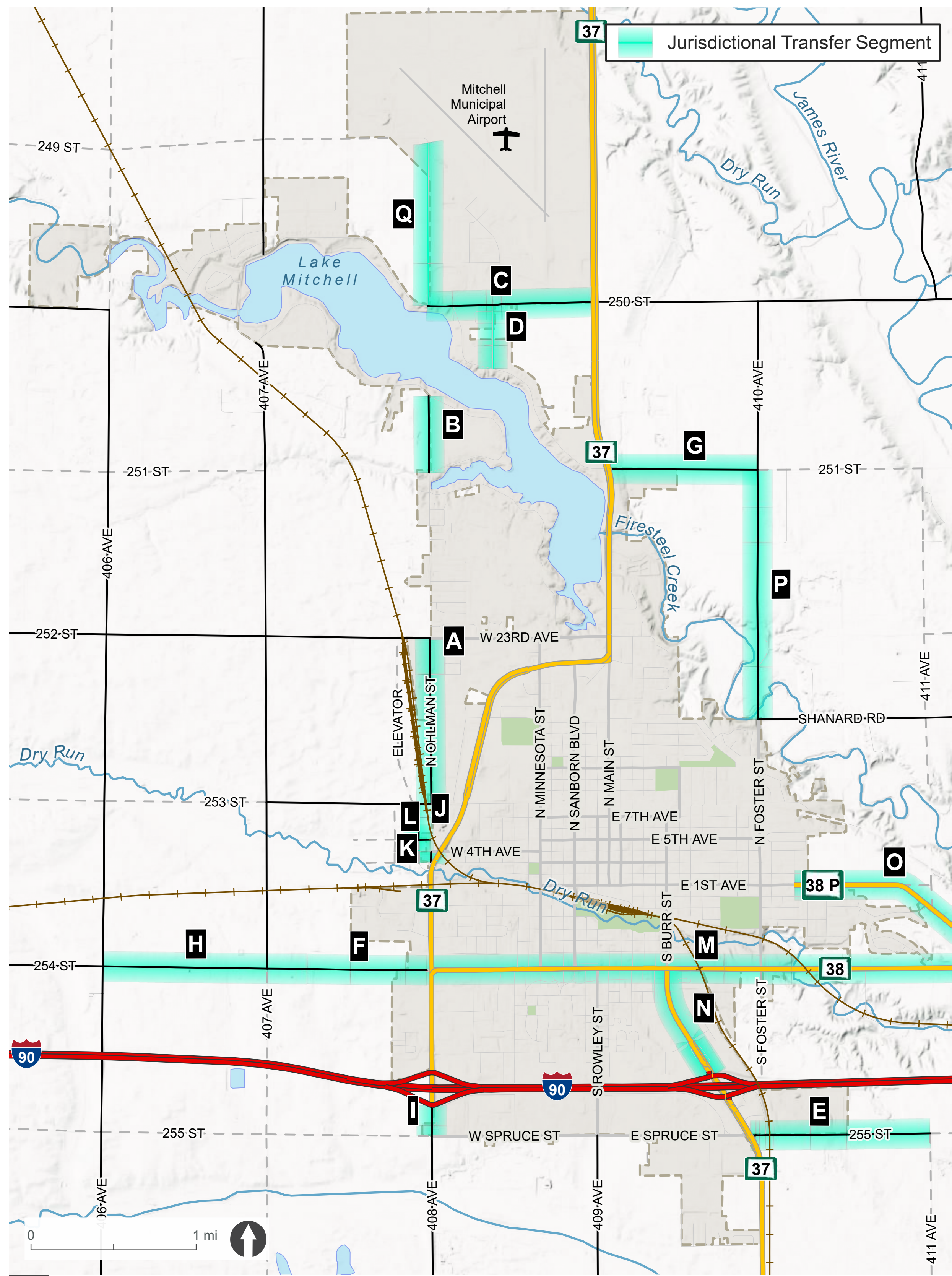


GATEWAY CORRIDORS



CANDIDATE ROADWAYS FOR JURISDICTIONAL TRANSFER

JURISDICTIONAL TRANSFER



CANDIDATE ROADWAYS FOR JURISDICTIONAL TRANSFER

PRIORITY TIER	MAP INDEX	SEGMENT	TRANSFER TYPE
Tier 1	A	Ohlman Street: 8th Avenue to 23rd Avenue	County to City
	B	Ohlman Street: Between South Harmon Drive intersections	County to City
	C	National Guard Road: North Harmon Drive to SD37	County to City
	D	Fiala Road: National Guard Road to North Harmon Drive	County to City
	E	Spruce Street: SD37 to 411th Avenue	County to City
	F	254th Street/Havens Avenue: 407th Avenue to Ohlman Street	County to City
Tier 2	G	38th Street: SD37 to Foster Street	County to City
	H	254th Street/Havens Avenue: 406th Avenue to 407th Avenue	County to City
	I	408th Avenue: I-90 interchange to Spruce Street	County to City
	J	Lytle Street: 3rd Avenue to 8th Avenue	County to City
	K	Ohlman Street: 3rd Avenue to 4th Avenue	County to City
	L	5th Avenue: Lytle Street to Ohlman Street	County to City
Tier 3	M	Havens Avenue/SD38: within city limits and east to SD38P	State to City
	N	Burr Street: I-90 interchange to Havens Avenue	State to City
	O	SD38P: Wallace Street to SD38	State to City
	P	Foster Street: Shanard Road to 38th Street/251st Street	County to City
	Q	Ohlman Street: North Harmon Drive to 249th Street	County to City

TIER 1: High priority to address existing needs

TIER 2: Medium priority, or priority based on future development timeline

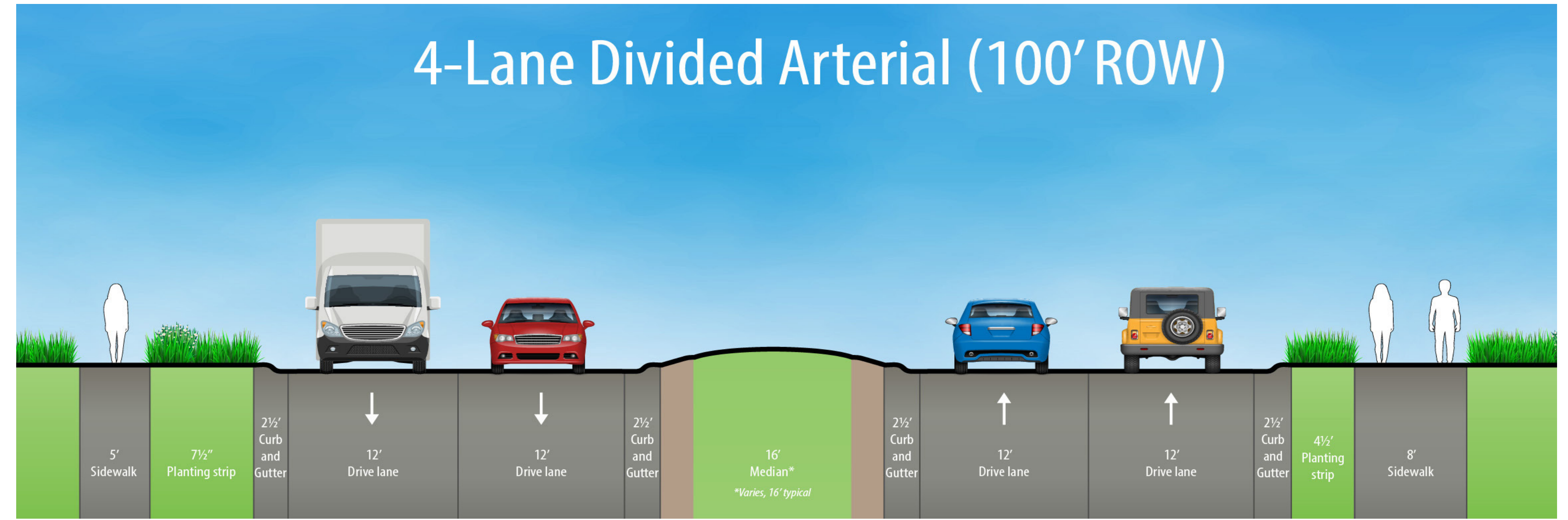
TIER 3: Low priority or long-range need

MAJOR ROADS PLAN TYPICAL SECTIONS

3-Lane Arterial or Collector (66' ROW)



4-Lane Divided Arterial (100' ROW)



2-Lane Collector and Local (66' ROW)



5-Lane Arterial (100' ROW)



2-Lane Collector and Local with Bike Lanes (66' ROW)



4-Lane Arterial (80' ROW)

