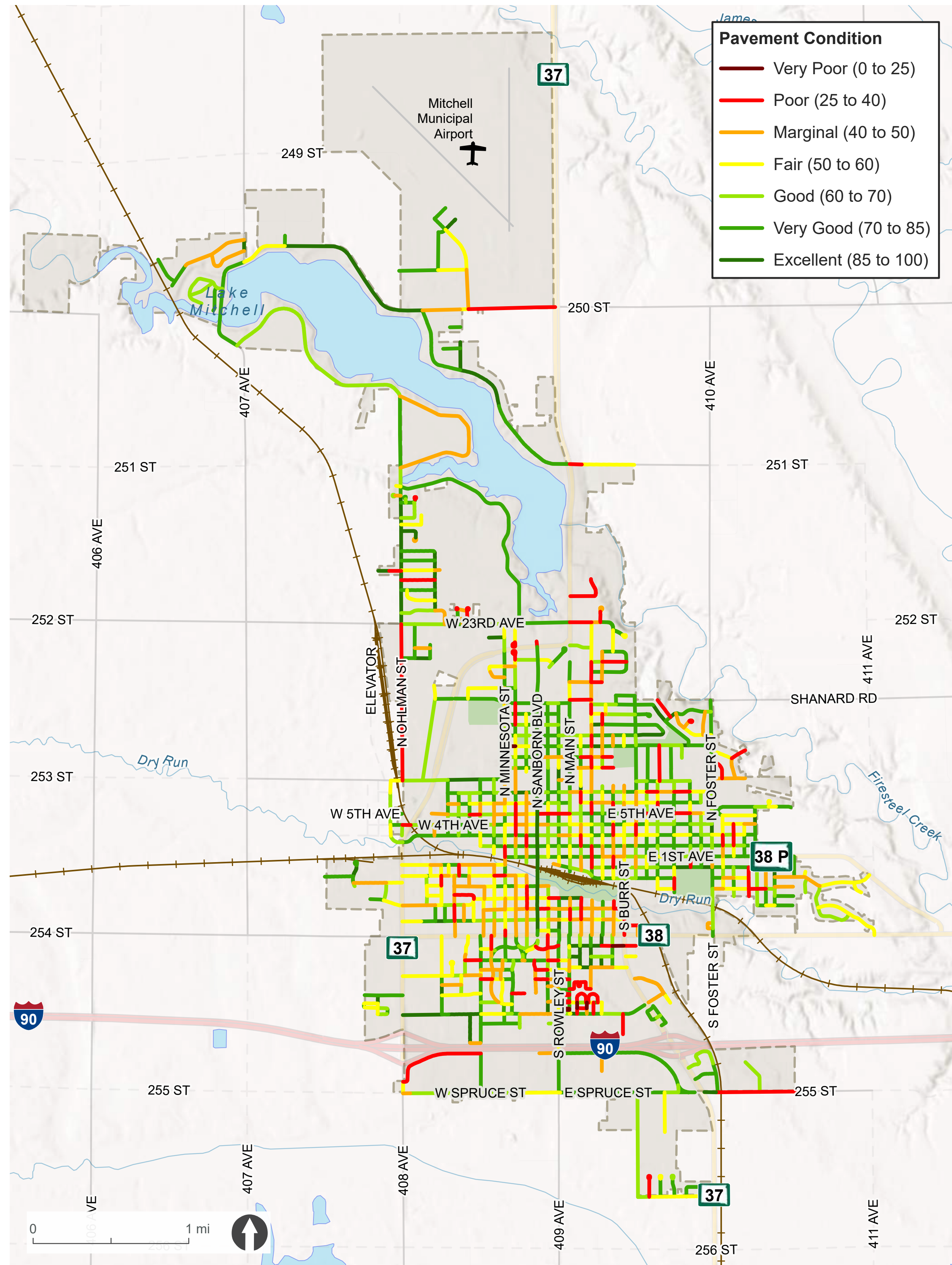


PAVEMENT MANAGEMENT PLAN

PAVEMENT CONDITION INDEX (PCI)

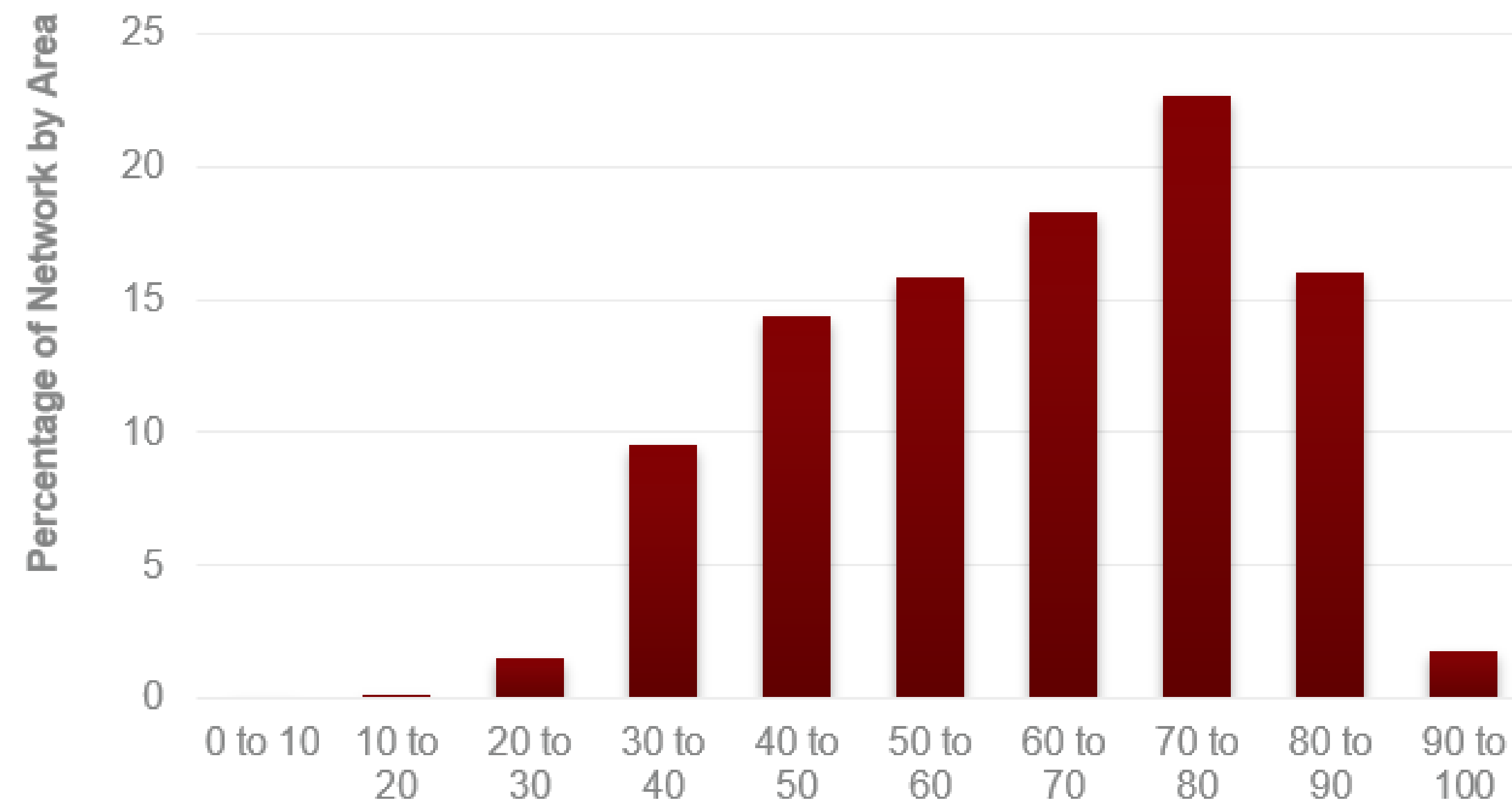
PAVEMENT CONDITION INDEX FOR THE CITY OF MITCHELL (2022)



PAVEMENT CONDITION INDEX DESCRIPTIONS

PCI RANGE	DESCRIPTION	RELATIVE REMAINING LIFE	DEFINITION
85-100	Excellent	15 to 25 Years	"Like new" condition. Little to no maintenance required when new; routine maintenance such as crack and joint sealing.
70-85	Very Good	12 to 20 Years	Routine maintenance such as patching and crack sealing with surface treatment such as seal coats or slurries.
60-70	Good	10 to 15 Years	Heavier surface treatments, chip seals, and thin overlays. Localized panel replacements for concrete.
40-60	Fair	7 to 12 Years	Heavy surface-based inlays or overlays with localized repairs. Moderate to extensive panel replacements.
25-40	Poor	5 to 10 Years	Sections will require very thick overlays, surface replacement, base reconstruction, and possible subgrade stabilization.
0-25	Very Poor	0 to 5 Years	High percentage of full reconstruction.

EXISTING PAVEMENT CONDITION INDEX DISTRIBUTION



PAVEMENT MANAGEMENT FUNDING AND PCI RECOMMENDATIONS

CITY OF MITCHELL NETWORK CONDITION SUMMARY

Average Network PCI: 63

Percent Rated 'Excellent' (PCI greater than 85): 7%

Percent Rated 'Poor' or 'Very Poor' (PCI less than 40): 10%

NETWORK CONDITION GOALS

Average Network PCI: 60 – 65

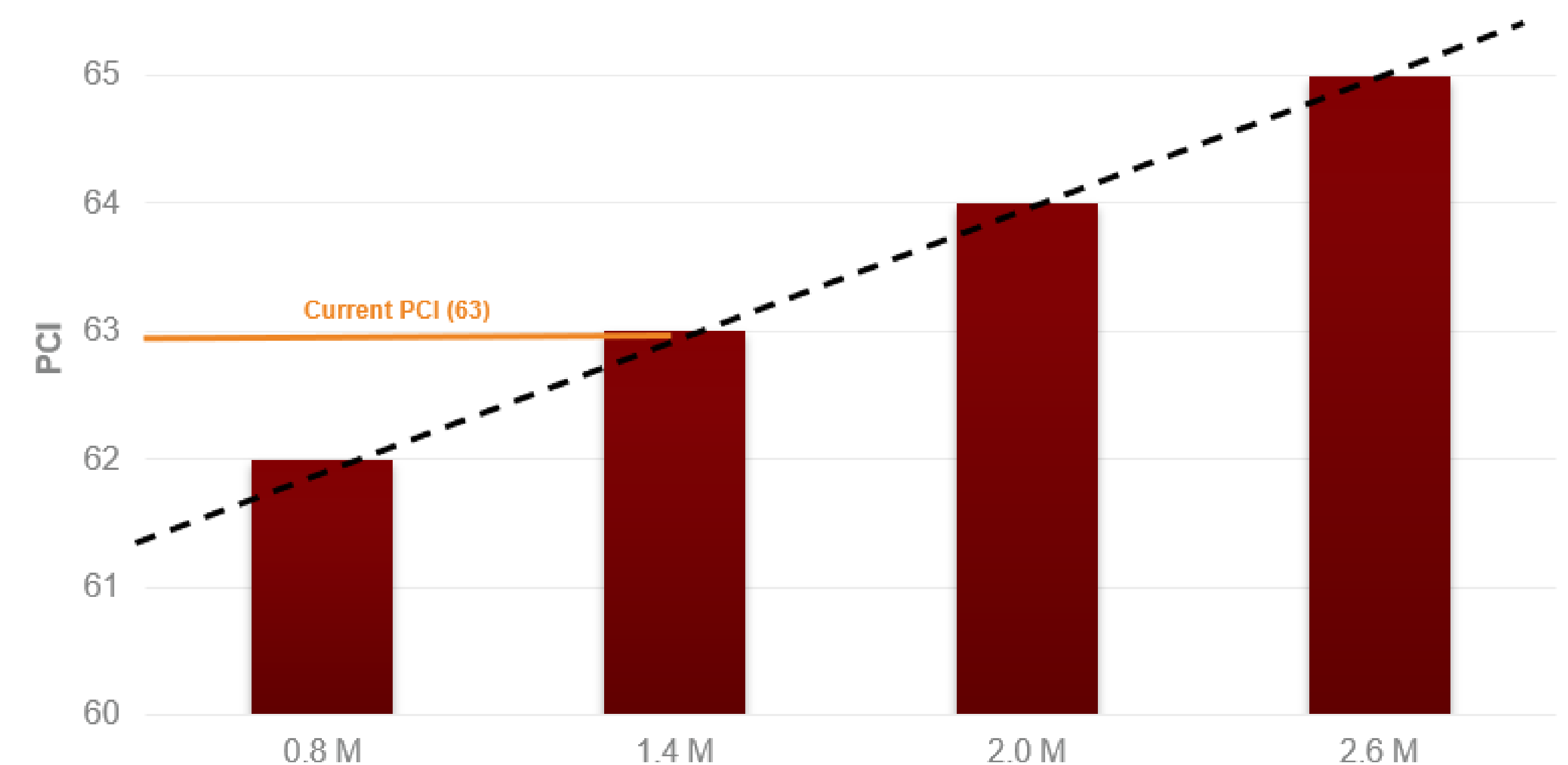
Percent Rated 'Excellent' (PCI greater than 85): minimum 15%

Percent Rated 'Poor' or 'Very Poor' (PCI less than 40): maintain 10%, with maximum of 15%

5-YEAR MAINTENANCE AND REHABILITATION SCENARIOS

Maintain Existing PCI: scenario maintains existing road network to a level equal to the current condition (average PCI of 63)

Increase PCI by One Annually: scenario increases the network's overall PCI by one point each year over the next five years

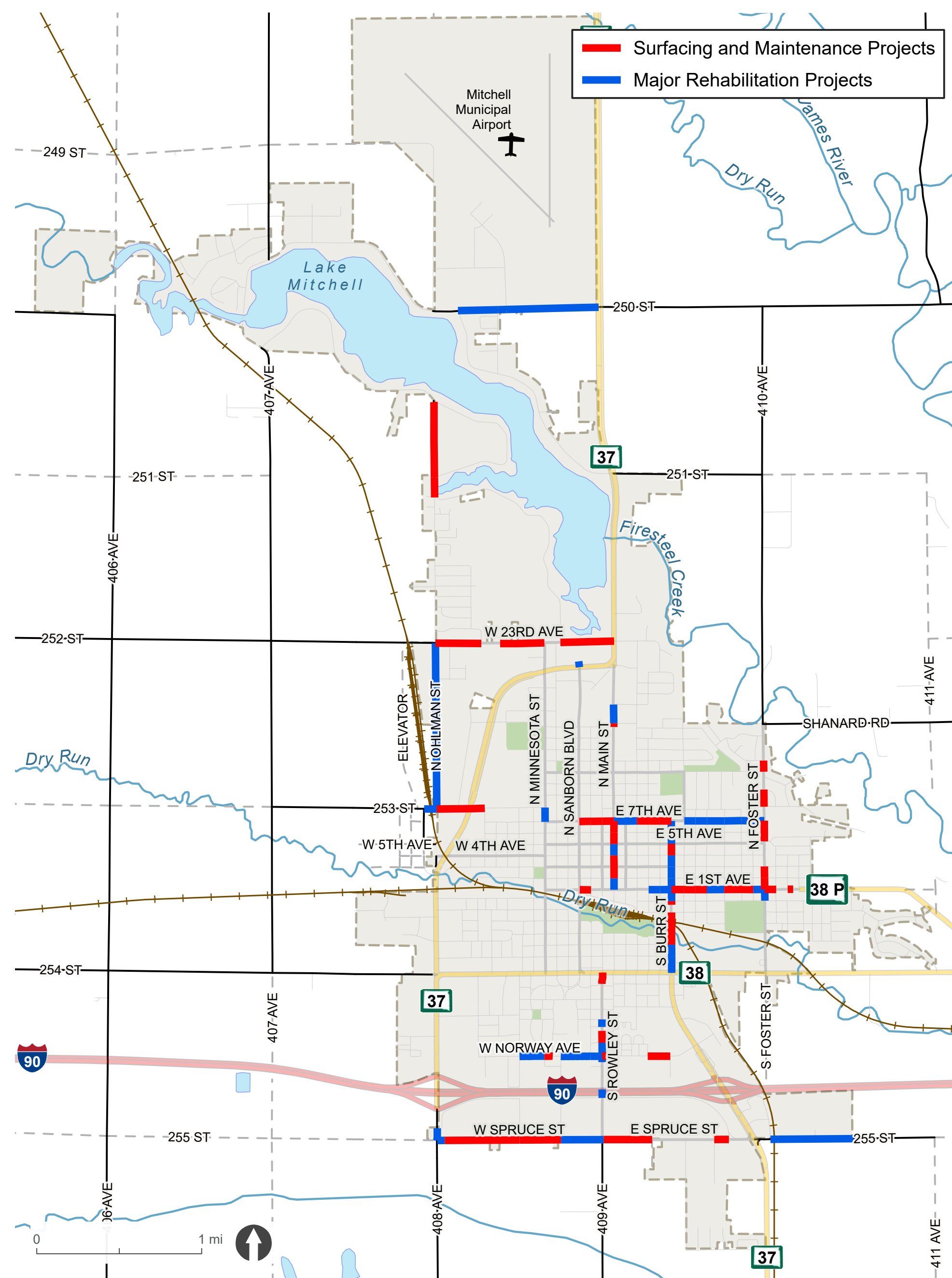


RECOMMENDED SCENARIO: 'MAINTAIN EXISTING PCI'

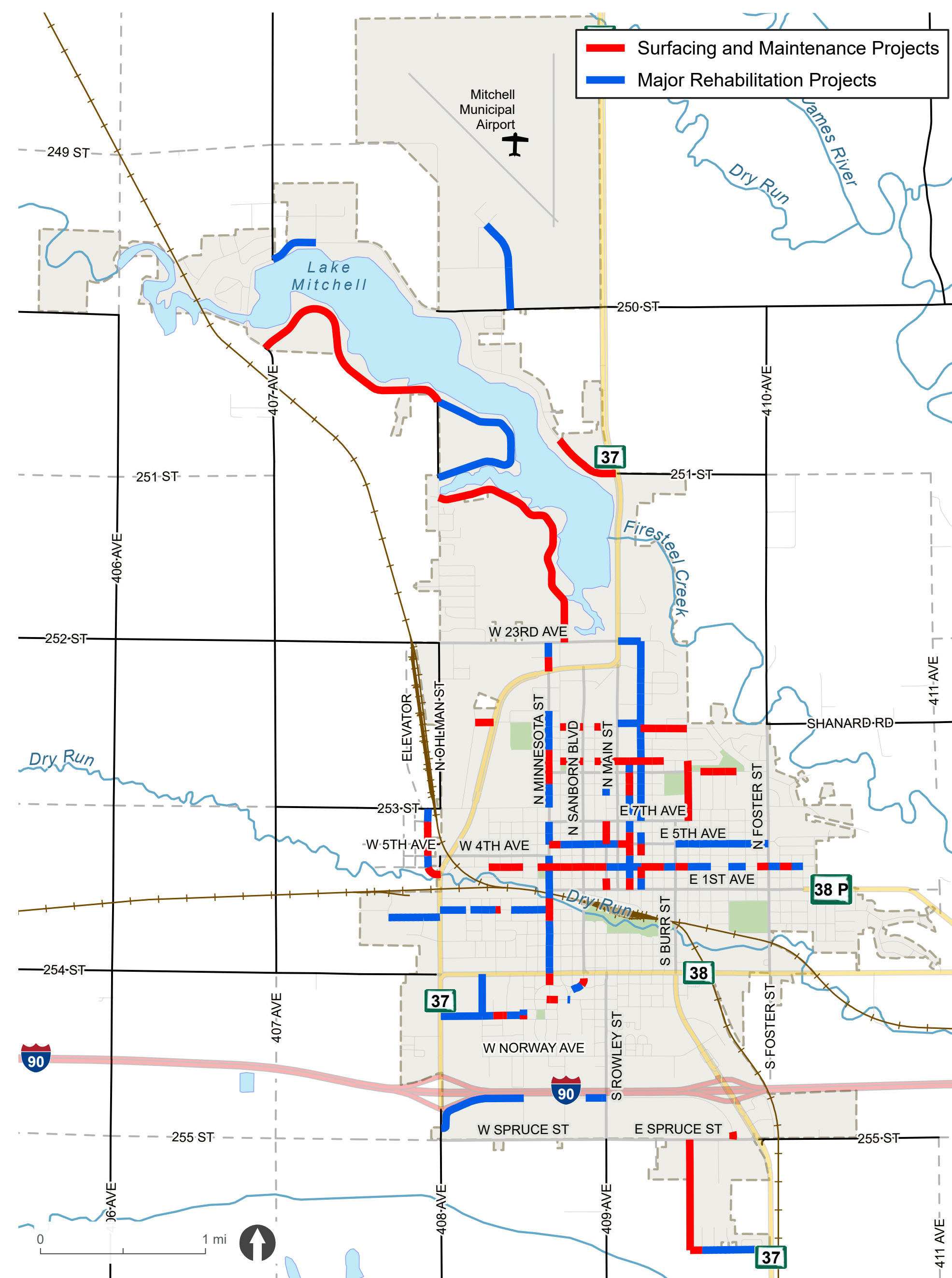
CANDIDATE PAVEMENT MANAGEMENT 'NEXT ACTIVITY'

The 'Next Activity' for pavement management was identified for several roadway segments throughout Mitchell. These figures serve as a reference to support flexibility when planning for future projects.

ARTERIAL STREETS



COLLECTOR STREETS



LOCAL STREETS

